



ACCELERATING THE USFWS HABITAT CONSERVATION EASEMENT PROGRAM PHASE III

Ducks Unlimited & Pheasants Forever propose to continue partnering with the U.S. Fish & Wildlife Service to strategically protect 3,000 acres of prairie and wetlands & restore 300 additional prairie-wetland acres by accelerating the purchase and restoration of private working land habitat conservation easements on private lands in west-central Minnesota.

- Phase 3 of a successful existing partnership among DU, PF, and U.S. Fish & Wildlife Service working with private landowners to protect private working land.
- Focus = Strategically focus on private land in west-central Minnesota near state WMAs, federal WPAs, and other protected private lands (e.g., RIM easements).
- Approach = DU and PF will purchase, record, hold, restore, and transfer conservation easements to U.S. Fish & Wildlife Service for long-term enforcement (no stewardship cost to OHF).

Primary goals:

- ◆ Protect (and restore where needed) 3,000 acres of prairie and wetlands;
- ◆ Restore an additional 300 acres of prairie-wetlands on easements purchased directly by USFWS;
- ◆ Keep prairie and wetlands intact for breeding ducks, pheasants, non-game while remaining private land;
- ◆ Allow “working lands” via grazing and delayed-haying after July 15 (also manages habitat too!);

Location: Prairie Pothole Region in the west-central prairie portion of Minnesota

Habitat Outputs: 2,250 acres of prairie and 750 acres of wetlands protected; plus, 75 acres of wetlands and 225 acres of prairie restored on habitat easements purchased directly by USFWS.

Wildlife Outcomes: Based on DNR guidance and best available science, we estimate this habitat will support 334 pairs of mallards and 5+ pairs of trumpeter swans, 1,456 pairs of bobolinks, 1,179 pairs of grasshopper sparrows, 7,425 – 19,800 monarch butterflies, and will result in 825 harvested rooster pheasants.

BUDGET:	\$ 9,996,000 TOTAL REQUEST
Personnel:	\$ 600,000 for DU & PF biologists and engineers over five years;
Contracts:	\$ 1,375,000 for prairie upland and wetland restoration contracts;
Easement Acquis:	\$ 7,500,000 for DU & PF to purchase easements for USFWS;
In-state Travel:	\$ 62,000 for DU & PF biologists and engineers over five years;
Prof. Services:	\$ 225,000 for boundary surveys, environmental, closings costs;
Direct Support Ser:	\$ 69,000 for DU & PF support costs (legal, admin, and office);
Other Equip/Tools:	\$ 5,000 for field equipment to assess and restore lands enrolled;
Supplies/Materials:	\$ 160,000 for native seed materials and restoration supplies.

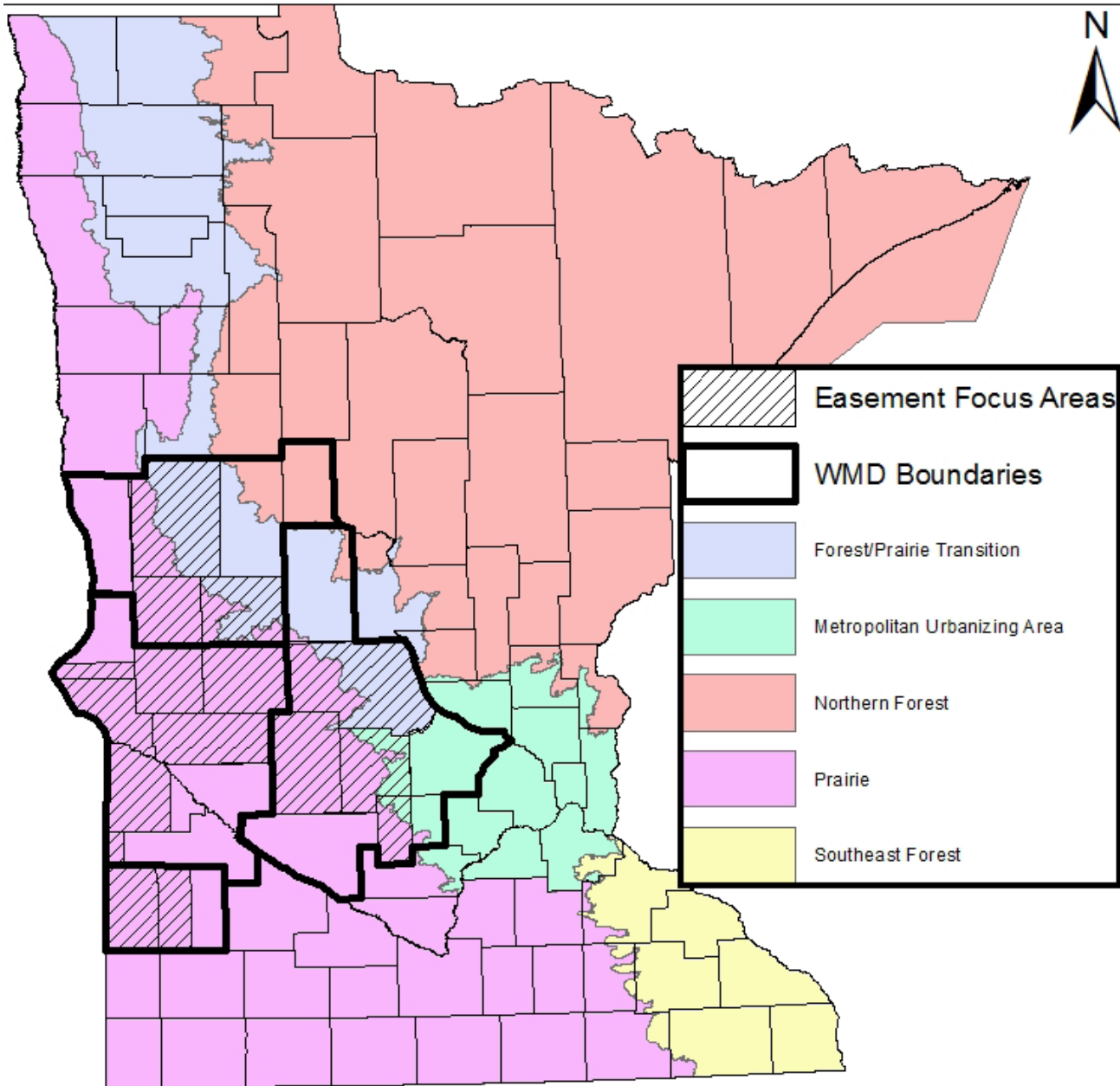
◆ **ML2018 OHF Phase I Grant UPDATE: 57% spent (\$1,676,400 of \$2,960,000 grant budget) and 89% acres protected of easement goal (642 acres of 720-acre grant goal)! ◆**

Note: ML2020 OHF Phase II Grant of \$3,187,000 just received in July 2020, so no funds spent or activity thus far)



Accelerating the USFWS Habitat Easement Program

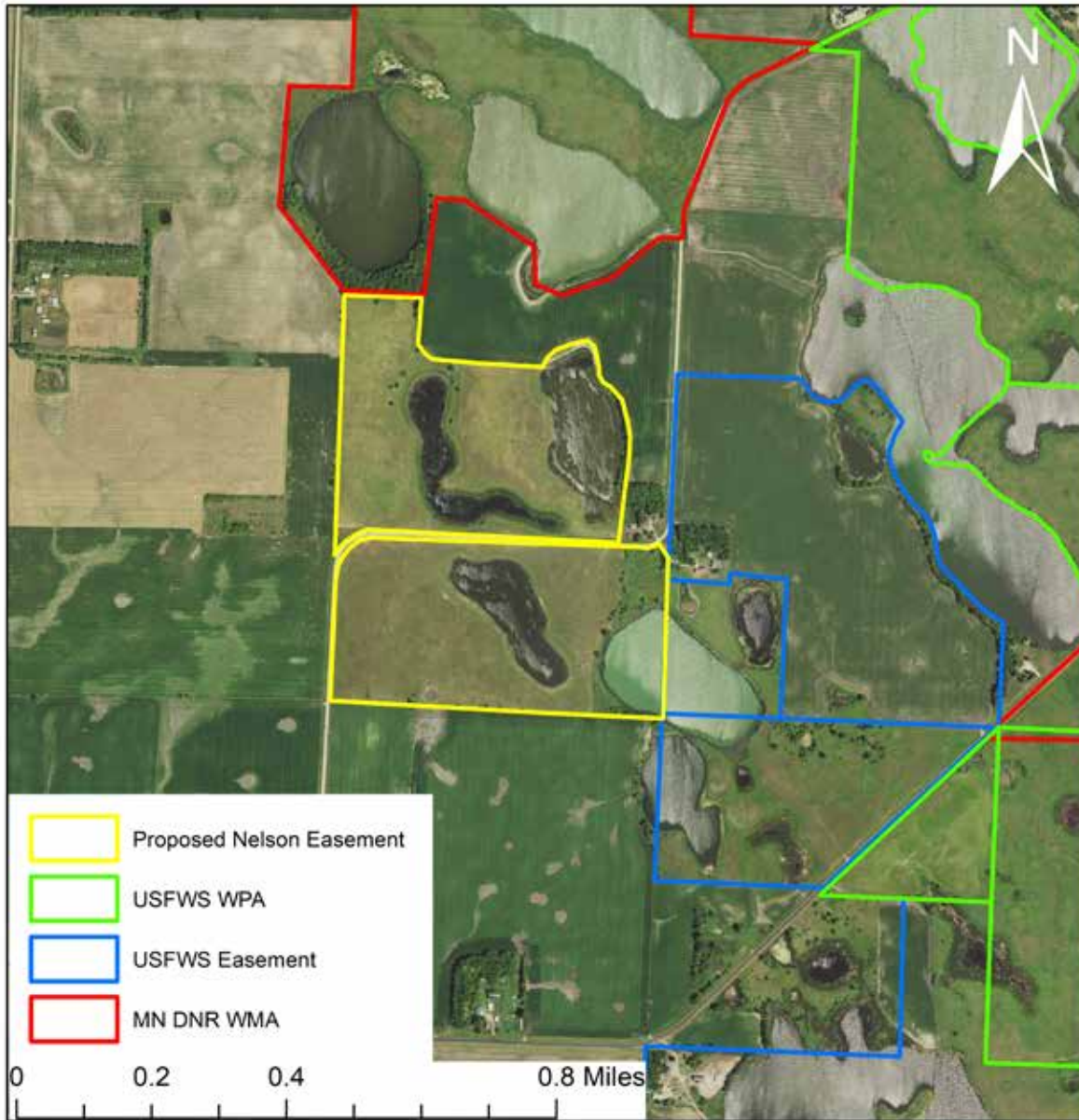
Big Stone WMD, Fergus Falls WMD, Litchfield WMD, Morris WMD







Nelson Easement Big Stone County, MN Big Stone Township T122N-R46W-S26 and 35

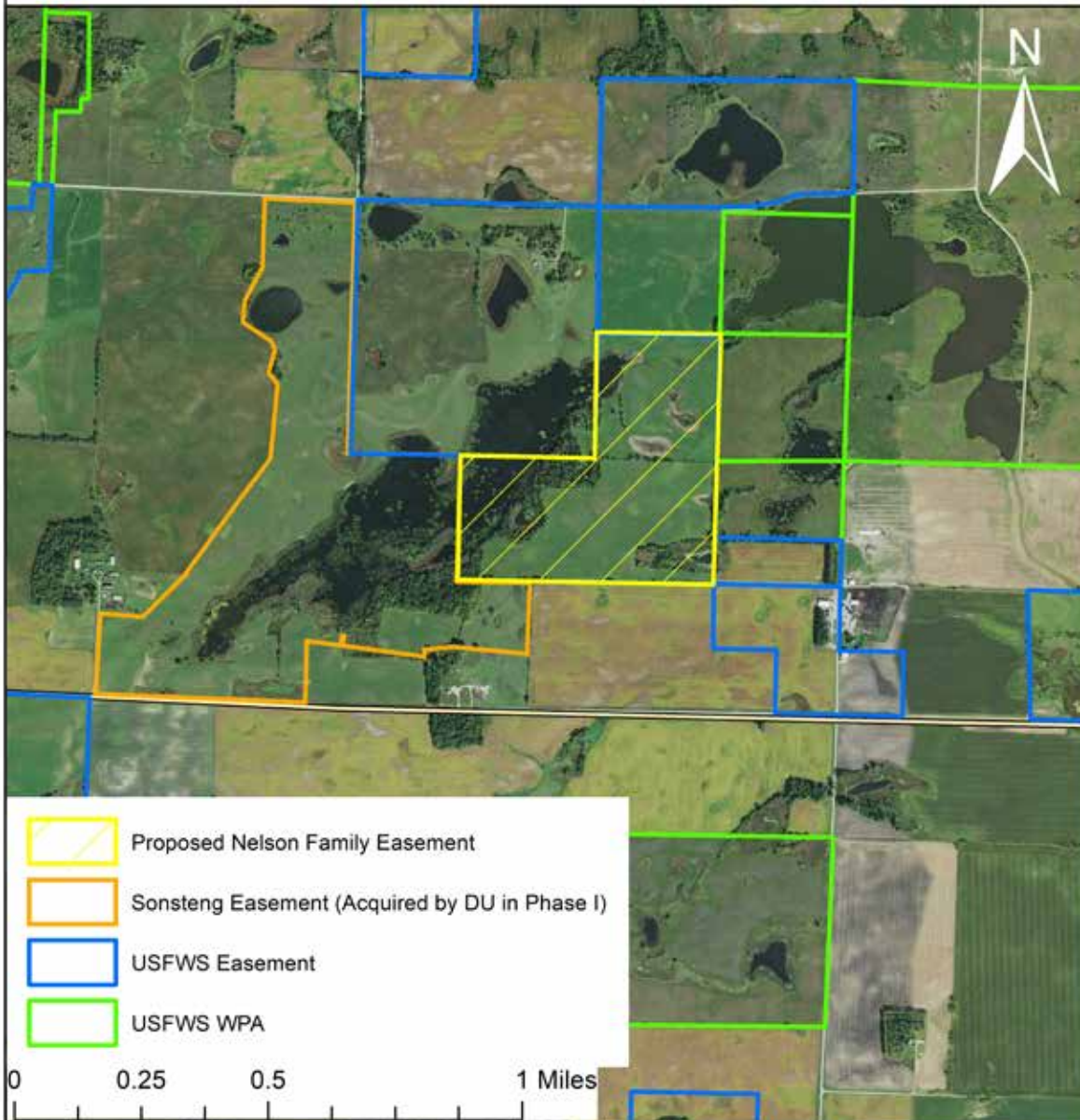


**LIVING
LAKES**





Nelson Family Easement Pope County, MN Rolling Forks Township T123N-R38W-S31



- Proposed Nelson Family Easement
- Sonsteng Easement (Acquired by DU in Phase I)
- USFWS Easement
- USFWS WPA

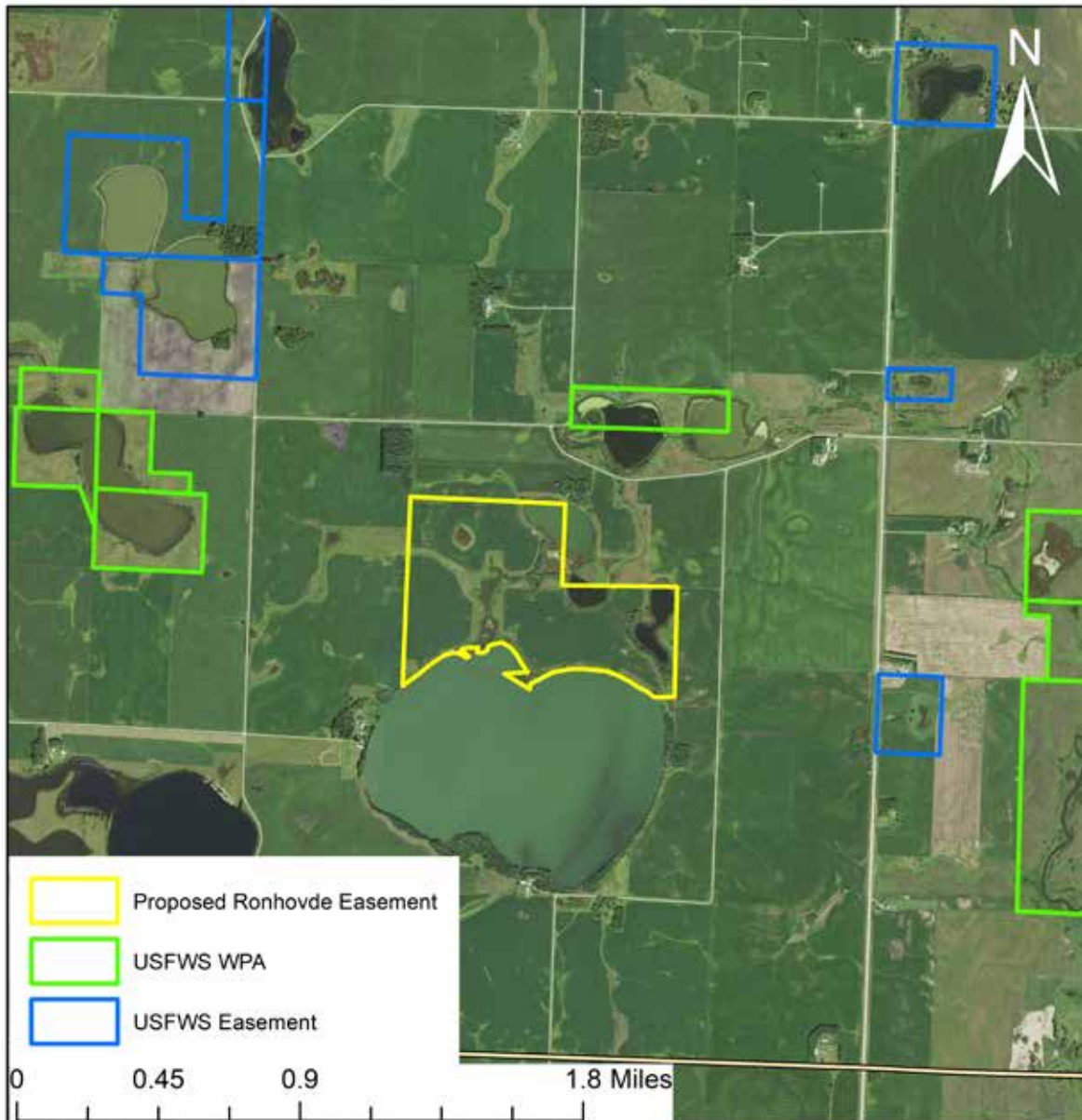





**LIVING
LAKES**





Ronhovde Easement Grant County, MN Roseville Township T127N-R42W-S25 and 26

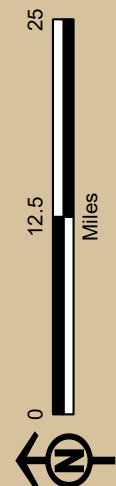
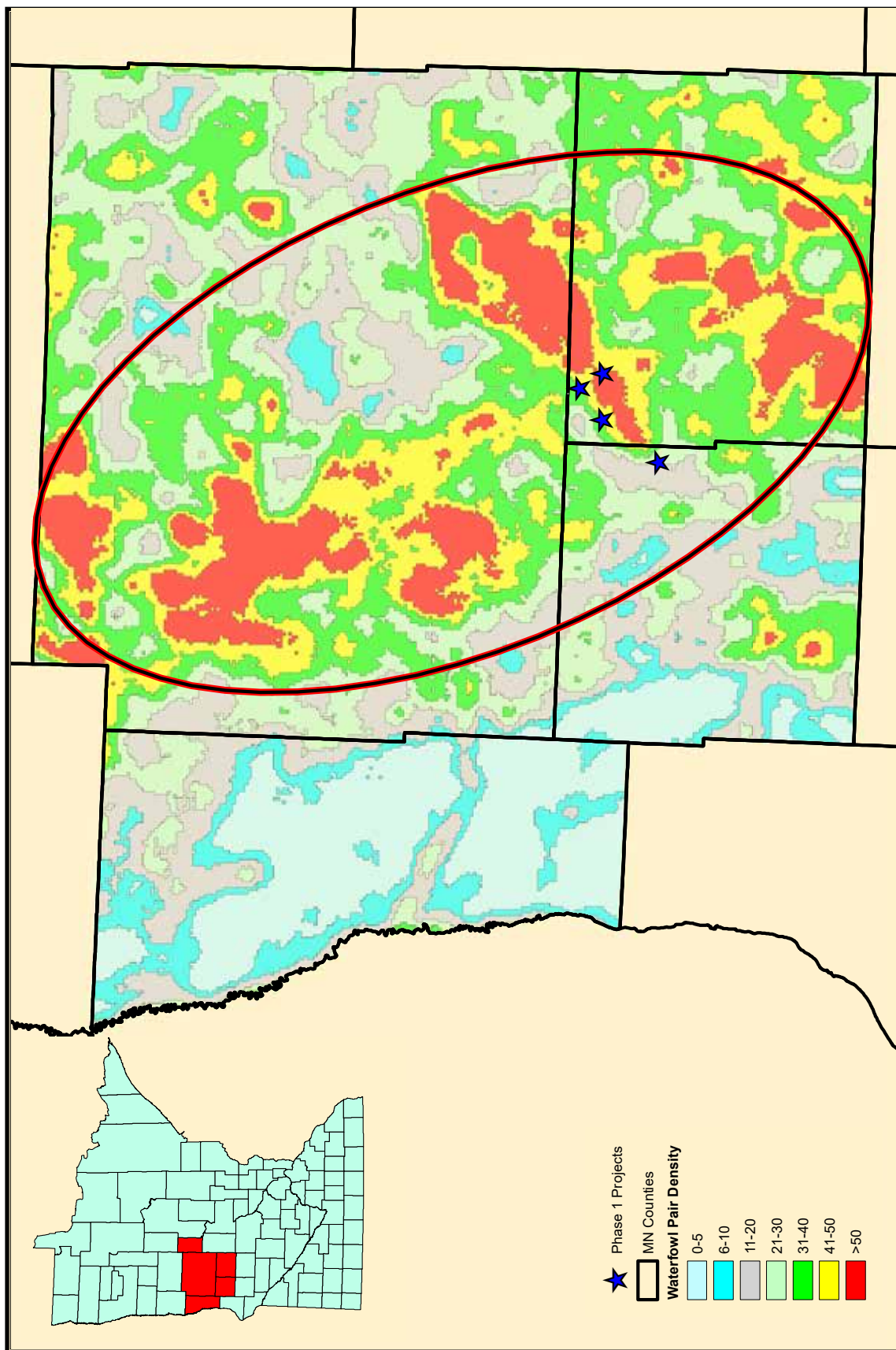


-  Proposed Ronhovde Easement
-  USFWS WPA
-  USFWS Easement



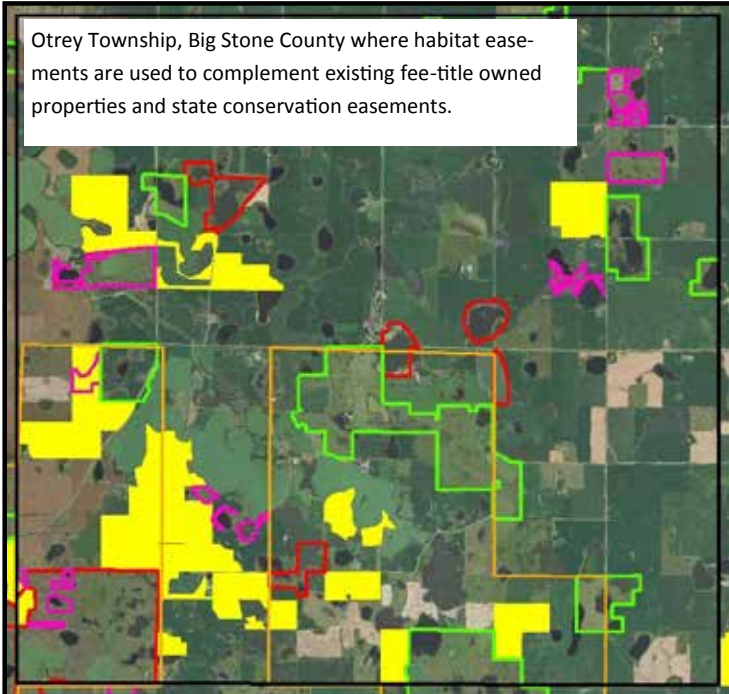
**LIVING
LAKES**





**Fergus Falls Wetland Management District
Acquisition Focus Area**





Otrey Township, Big Stone County where habitat easements are used to complement existing fee-title owned properties and state conservation easements.



Alex Galt

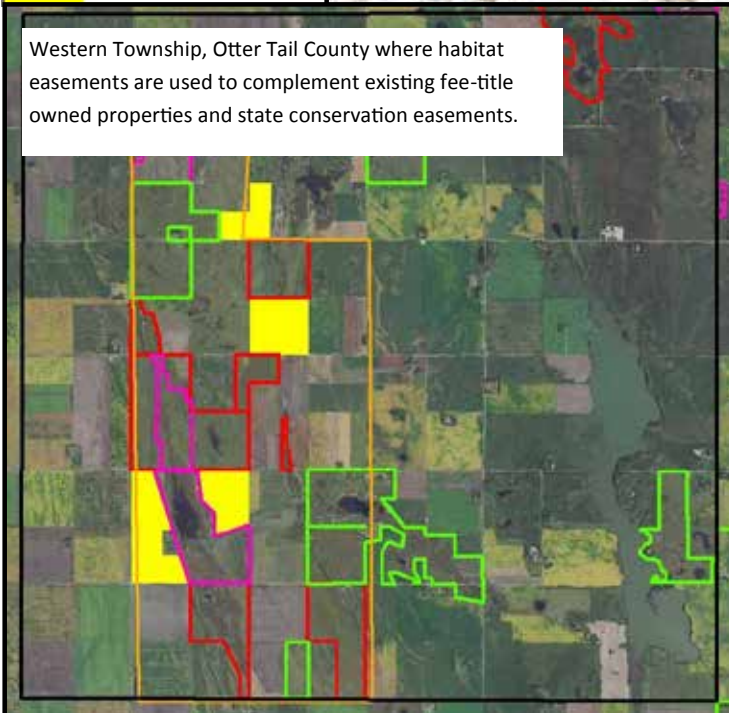
- Pheasant Plan Complex
- WPA Boundaries
- RIM Easements
- WMA Boundaries
- Habitat Easements



Alex Galt



Rex Johnson



Western Township, Otter Tail County where habitat easements are used to complement existing fee-title owned properties and state conservation easements.



Shawn May



Stacy Salveold